

68

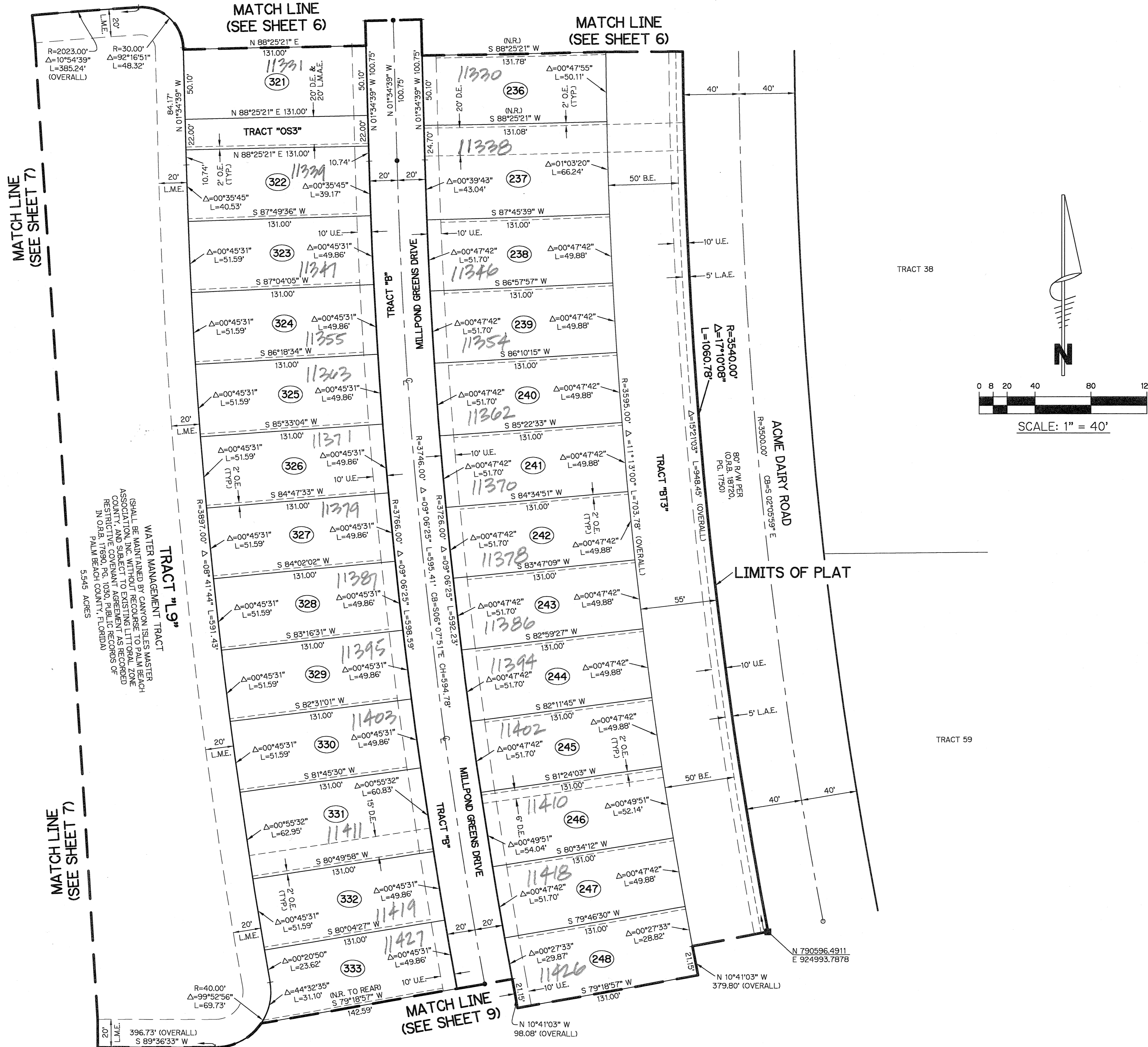
CANYON ISLES (A.K.A. FOGG CENTRAL) PLANNED UNIT DEVELOPMENT

# CANYON ISLES - PLAT THREE

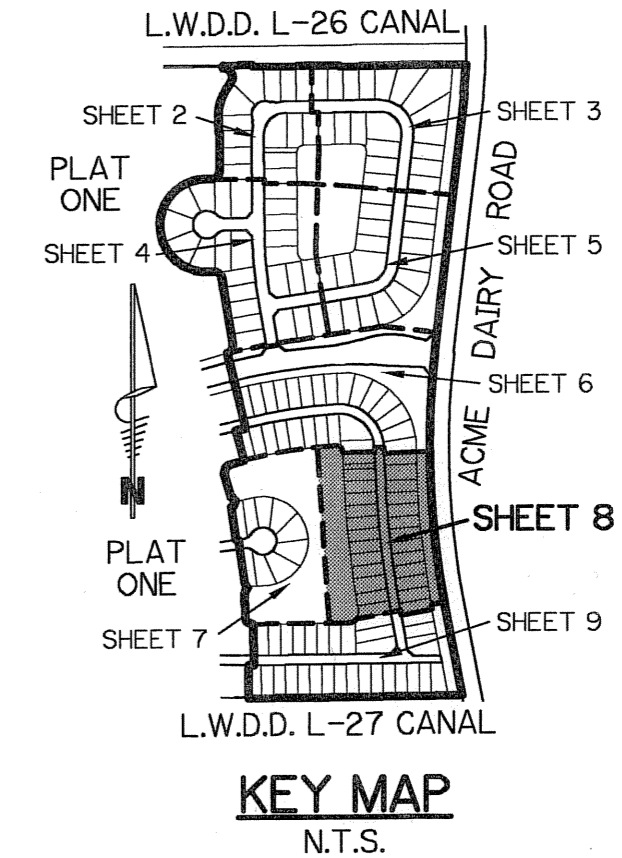
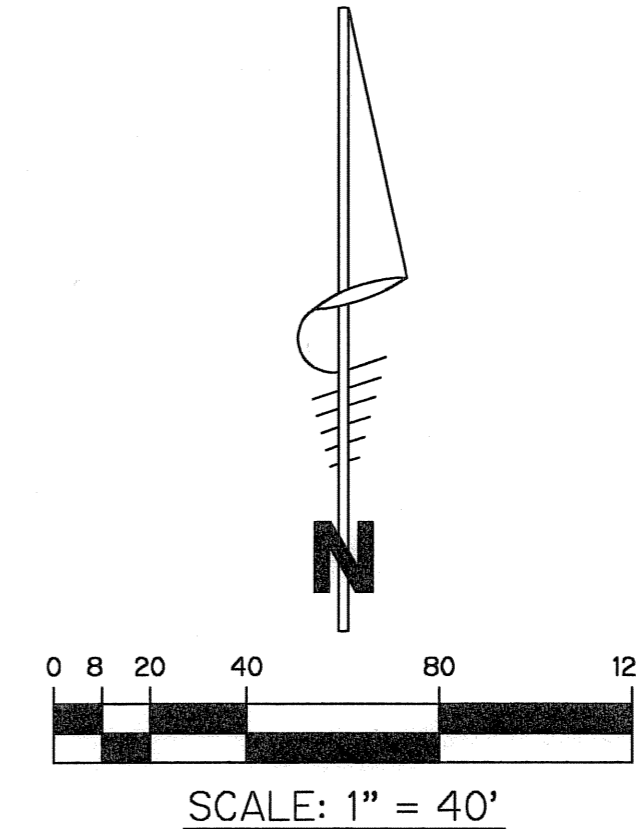
A PARCEL OF LAND IN SECTION 32, TOWNSHIP 45 SOUTH, RANGE 42 EAST, PALM BEACH COUNTY, FLORIDA, BEING A PORTION OF TRACTS 6-10, 23-27, 38-41, AND 56-59, BLOCK 59, PALM BEACH FARMS Co. PLAT No.3, RECORDED IN PLAT BOOK 2, PAGE 45, OF THE PUBLIC RECORDS OF PALM BEACH COUNTY, FLORIDA

SHEET 8 OF 9 JULY, 2004

**BP BROWN & PHILLIPS, INC.**  
CERTIFICATE OF AUTHORIZATION # LB 6473  
901 NORTHPOINT PARKWAY, SUITE 305  
WEST PALM BEACH, FLORIDA 33407  
561-615-3988, 561-615-3986 FAX



- LEGEND:**
- - SET PERMANENT REFERENCE MONUMENT, L.B. #6473
  - - FOUND PERMANENT REFERENCE MONUMENT, L.B. #6473
  - - SET PERMANENT CONTROL POINT, L.B. #6473
  - - FOUND PERMANENT CONTROL POINT, L.B. #6473
  - Δ - DELTA ANGLE
  - B.E. - BUFFER EASEMENT
  - CB - CHORD BEARING
  - CH - CHORD DISTANCE
  - CL - CENTERLINE
  - D.B. - DEED BOOK
  - D.E. - DRAINAGE EASEMENT
  - L. - ARC LENGTH
  - L.A.E. - LIMITED ACCESS EASEMENT
  - L.M.A.E. - LAKE MAINTENANCE ACCESS EASEMENT
  - L.M.E. - LAKE MAINTENANCE EASEMENT
  - L.W.D.D. - LAKE WORTH DRAINAGE DISTRICT
  - N.R. - NOT RADIAL
  - N.T.S. - NOT TO SCALE
  - O.R.B. - OFFICIAL RECORD BOOK
  - O.E. - OVERHANG EASEMENT
  - P.B. - PLAT BOOK
  - P.C.P. - PERMANENT CONTROL POINT
  - P.S. - PAGES
  - P.O.B. - POINT OF BEGINNING
  - P.O.C. - POINT OF COMMENCEMENT
  - P.S.M. - PROFESSIONAL SURVEYOR AND MAPPER
  - R - RADIUS
  - R/W - RIGHT-OF-WAY
  - U.E. - UTILITY EASEMENT



SUBDIVISION Canyon Isles - Plat 3  
 BOOK 106  
 FLOOD ZONE B  
 QUAD # 50  
 TAZ 750  
 PUD NAME FOGG CENTRAL

PAGE 08  
 FLOOD MAP # 200 A  
 ZONING PDD  
 ZIP CODE 33451

WATER MANAGEMENT TRACT  
 SHALL BE MAINTAINED BY CANYON ISLES MASTER  
 ASSOCIATION, INC. WITHOUT RECONSTRUCTION  
 RESTRICTIVE COVENANTS AND RECORDS OF  
 IN ORB, T99B, P090 PUBLIC RECORDS OF  
 PALM BEACH COUNTY, FLORIDA  
 5.545 ACRES

MATCH LINE  
 (SEE SHEET 7)

MATCH LINE  
 (SEE SHEET 6)

MATCH LINE  
 (SEE SHEET 6)

MATCH LINE  
 (SEE SHEET 9)